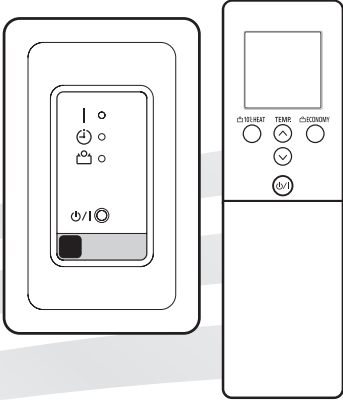


AIR CONDITIONER OPTIONAL PARTS



OPERATING MANUAL
IR receiver unit (for duct)

English

BEDIENUNGSANLEITUNG
IR-Empfängereinheit (für Luftkanalsysteme)

Deutsch

MODE D'EMPLOI
Unité de réception infrarouge (pour conduit)

Français

MANUAL DE FUNCIONAMIENTO
Unidad receptora de infrarrojos (para ducto)

Español

MANUALE DI ISTRUZIONI
Unità ricevitore IR (per condotto)

Italiano

ΕΓΧΕΙΡΙΔΙΟ ΛΕΙΤΟΥΡΓΙΑΣ
Μονάδα δέκτη IR (αγωγού)

Ελληνικά

MANUAL DE OPERAÇÃO
Unidade do recetor de infravermelhos (para conduta)

Português

РУКОВОДСТВО ПО ЭКСПЛУАТАЦИИ
ИК-приемник (для кассетного типа)

Русский

KULLANIM KILAVUZU
Kızılötesi alıcı ünite (Oluk için)

Türkçe

KEEP THIS MANUAL FOR FUTURE REFERENCE

BEWAHREN SIE DIESES HANDBUCH ZUM
SPÄTEREN NACHSCHLAGEN AUF

CONSERVEZ CE MANUEL POUR RÉFÉRENCE
ULTÉRIEURE

CONSERVE ESTE MANUAL PARA FUTURA
REFERENCIA

CONSERVARE IL PRESENTE MANUALE PER
FUTURE CONSULTAZIONI

ΦΥΛΑΞΤΕ ΤΟ ΕΓΧΕΙΡΙΔΙΟ ΓΙΑ ΜΕΛΛΟΝΤΙΚΗ
ΑΝΑΦΟΡΑ

GUARDE ESTE MANUAL PARA REFERÊNCIA
FUTURA

ХРАНИТЕ РУКОВОДСТВО ДЛЯ СПРАВОК В
БУДУЩЕМ

BU KILAVUZU İLERİDE BAŞVURMAK ÜZERE
SAKLAYIN



PART No. 9378629080

OPERATING MANUAL


PART No. 9378629080
IR receiver unit (for duct)


CONTENTS


| | |
|------------------------------------|---|
| SAFETY PRECAUTIONS..... | 1 |
| NAME OF PARTS..... | 2 |
| FEATURES AND FUNCTIONS..... | 3 |
| PREPARATION..... | 3 |
| OPERATION..... | 5 |
| TIMER FUNCTIONS..... | 5 |
| ON/OFF TIMER..... | 5 |
| PROGRAM TIMER..... | 6 |
| SLEEP TIMER..... | 6 |
| ECONOMY OPERATION..... | 6 |
| 10°C HEAT OPERATION..... | 7 |
| FAN CONTROL FOR ENERGY SAVING..... | 7 |
| OTHER SETTINGS AND OPERATION..... | 7 |
| CLEANING AND CARE..... | 8 |
| TROUBLESHOOTING..... | 8 |


SAFETY PRECAUTIONS

To prevent personal injury, or property damage, read this section carefully before you use this product, and be sure to comply with the following safety precautions. Incorrect operation due to failure to follow the instructions may cause harm or damage, the seriousness of which is classified as follows:


 **WARNING** This mark warns of death or serious injury.


 **CAUTION** This mark warns of injury or damage to property.


 This mark denotes an action that is PROHIBITED.

 This mark denotes an action that is COMPULSORY.



WARNING

-  This product contains no user-serviceable parts. Always consult authorized service personnel for repairing, installation, and relocation of this product. Improper installation or handling will cause leakage, electric shock, or fire.
- In the event of a malfunction such as burning smell, immediately stop operation of the air conditioner, and disconnect all the power supply by turning off the electrical breaker or disconnecting the power plug. Then consult authorized service personnel.
- Take care not to damage the power supply cable. If the supply cord is damaged, it must be replaced by the manufacturer, its service agent or similarly qualified persons in order to avoid a hazard.
- In the event of refrigerant leakage, be sure to keep away from fire or any flammables, and consult authorized service personnel.
- In the event of a thunder storm or any prior sign of a lightning strike, turn off the air conditioner via the remote controller, and refrain from touching the product or the power source to prevent any electrical hazards.

-  This appliance is not intended for use by persons (including children) with reduced physical, sensory or mental capabilities, or lack of experience and knowledge, unless they have been given supervision or instruction concerning use of the appliance by a person responsible for their safety. Children should be supervised to ensure that they do not play with the appliance.
- Dispose of the packing materials safely. Tear and dispose of the plastic packing bags so that children cannot play with them. There is the danger of suffocation if children play with the original plastic bags.

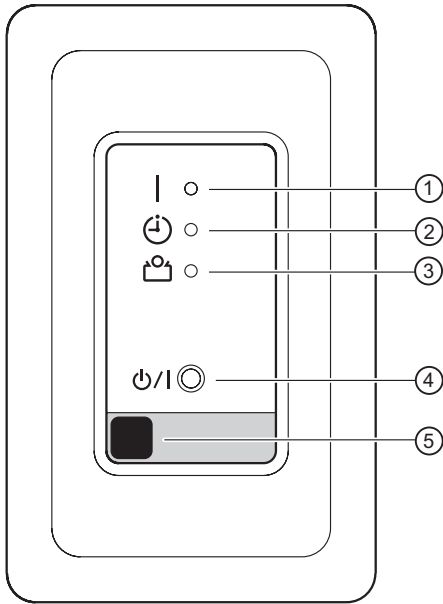
-  Do not start or stop the operation of this product by turning on or off the circuit breaker.
- Do not use inflammable gases near this product.
- Do not expose yourself directly to the cooling air flow for many hours.
- Do not insert your fingers or any other objects into outlet port or inlet port.
- Do not operate with wet hands.

CAUTION

-  Provide occasional ventilation during use.
- Always operate this product with air filters installed.
- Ensure that any electronic equipment is at least 1 meter away from this product.
- Turn off power source when not using this product for extended periods.
- After a long period of use, ensure to get the mounting of the indoor unit checked to prevent this product from falling down.
- The air flow direction and the room temperature should be carefully considered when you use this product in a room with infants, children, elderly or sick persons.
- Keep the surroundings of the outdoor unit clean and tidy, and do not place items around it. Any objects blocking or entering from the outlet ports may cause product malfunction.
-  Do not direct the air flow at fireplaces or heating apparatus.
- Do not block or cover the inlet port and the outlet port.
- Do not apply any heavy pressure to radiator fins.
- Do not climb on, place objects on, or hang objects from this product.
- Do not place any other electrical products or household belongings under this product. Dripping condensation from this product might get them wet, and may cause damage or malfunction of your property.
- Do not expose this product directly to water.
- Do not use this product for preservation of food, plants, animals, precision equipment, art work, or other objects. This may cause quality deterioration of those items.
- Do not expose animals or plants to the direct air flow.
- Do not drink the drainage from the air conditioner.
- Do not pull the power supply cable.
- Do not touch the aluminum fins of heat exchanger built-in this product to avoid personal injury when you install or maintain the unit.
- Do not stand on unstable steps when operating or cleaning this product. It may overturn and can cause injury.

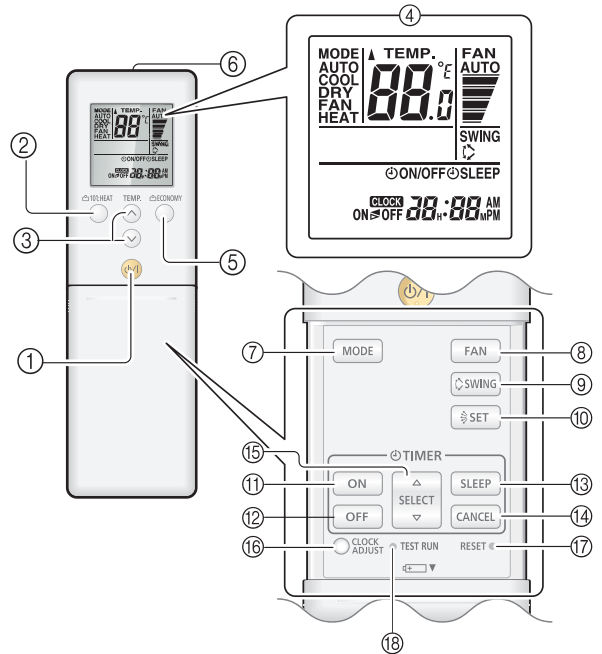
NAME OF PARTS

Receiver unit control panel



- ① OPERATION indicator lamp (GREEN)
- ② TIMER indicator lamp (ORANGE)
- ③ ECONOMY indicator lamp (GREEN)
- ④ "MANUAL AUTO" button
- ⑤ REMOTE CONTROL SIGNAL RECEIVER

Remote controller



- ① Start/Stop button
- ② "10 °C HEAT" button
- ③ "TEMP. (Λ ∇)" button
- ④ Remote controller display
- ⑤ "ECONOMY" button
- ⑥ Signal transmitter
- ⑦ "MODE" button
- ⑧ "FAN" button
- ⑨ "SWING" button
- ⑩ "SET (Vertical airflow)" button
- ⑪ "ON" timer button
- ⑫ "OFF" timer button
- ⑬ "SLEEP" button
- ⑭ "CANCEL" button
- ⑮ "SELECT (Δ ∇)" button
- ⑯ "CLOCK ADJUST" button
- ⑰ "RESET" button*
- ⑱ "TEST RUN" button*

*: Press the "RESET" button or "TEST RUN" button gently by using the tip of a ballpoint pen or other small objects in the correct direction as shown in this figure.



FEATURES AND FUNCTIONS

Instructions relating to heating (*) are applicable only to Heating and Cooling model (Reverse Cycle).

ECONOMY OPERATION

When Economy operation mode is operated, the room temperature will be little higher than the set-temp under cooling mode and lower than set-temp under heating* mode. Therefore, the Economy operation mode is able to save more energy than other normal modes.

AUTO CHANGEOVER

The operation mode (Cooling, Heating*) is switched automatically to maintain the set temperature, and the temperature is kept constant at all times.

FAN CONTROL FOR ENERGY SAVING

When the set temperature is reached during cooling operation, the fan operates intermittently and power is saved.

10°C HEAT OPERATION*

The room temperature can be maintained at 10°C so as to prevent the room temperature from falling too far.

FINE TEMPERATURE ADJUSTMENTS

The temperature can be set in 0.5°C increments.

PROGRAM TIMER

The program timer allows you to integrate OFF timer and ON timer operations in a single sequence. The sequence can involve 1 transition from OFF timer to ON timer, or from ON timer to OFF timer, within a 24 hour period.

SLEEP TIMER

● COOLING MODEL

When the "SLEEP" button is pressed during cooling or dry mode, the thermostat setting is gradually raised during the period of operation. When the set time is reached, the unit automatically turns off.

● HEAT & COOL MODEL (REVERSE CYCLE)

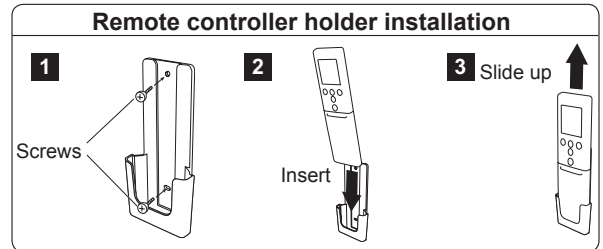
When the "SLEEP" button is pressed during heating mode, the air conditioner's thermostat setting is gradually lowered during the period of operation; during cooling or dry mode, the thermostat setting is gradually raised during the period of operation. When the set time is reached, the unit automatically turns off.

WIRED REMOTE CONTROLLER

You can use both wireless and wired remote controller simultaneously, however, the following functions will be restricted.

- On/Off timer (depending on the remote controller type)
- Sleep timer (depending on the remote controller type)
- 10 °C Heat operation

PREPARATION



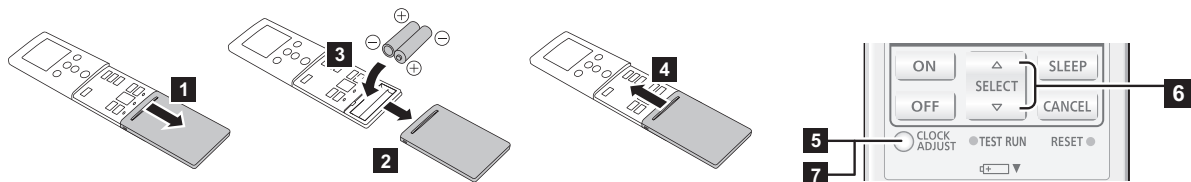
! WARNING

- ! Take care to prevent infants and young children from accidentally swallowing the batteries.

! CAUTION

- ⊘ Do not attempt to recharge dry batteries.
- ⊘ Do not use dry batteries that has been recharged.
- ! When not using the remote controller for an extended period, remove the batteries to avoid possible leakage and damage to the unit.
- If leaking battery fluid comes in contact with your skin, eyes, or mouth, immediately wash with copious amounts of water, and consult your physician.
- Dead batteries should be removed immediately and disposed of properly, either in a battery collection receptacle or to the appropriate authority.

Battery (R03/LR03/AAA × 2) loading and remote controller preparation



- 5** Press "CLOCK ADJUST" button to start clock setting.
- 6** Set the time by pressing "SELECT (△▽)" button. *By pressing the "TEMP. (△▽)" buttons, the time indicator can be changed from a 24-hour to a 12-hour clock. Pressing △ or ▽ changes the value by the minute. Pressing down on △ or ▽ changes the value by 10 minutes.
- 7** To complete, press the "CLOCK ADJUST" button again close to the indoor unit. Settings may not be properly sent if pressed from a distance.

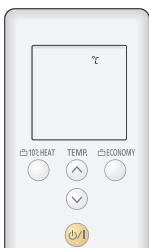
Notes:

- Use specified type of batteries only.
- Do not mix different types or new and used batteries together.
- Batteries can be used about 1 year in ordinary use.
- If the remote control range noticeably shortens, or the display is pale or difficult to see, replace the batteries, and press the "RESET" button as shown in page 4.

Temperature display

To change the temperature unit

- 1** Press the Start/Stop button unit only the clock is displayed.
- 2** Press down on the "TEMP. (△)" button for at least 5 seconds to display the current temperature unit. (Factory setting: °C)
- 3** Press the "TEMP. (△▽)" buttons to switch the temperature unit. (°F ↔ °C)
- 4** By either of pressing the Start/Stop button or no additional button operation for 30 seconds in step 2, the temperature unit currently selected will be set.



OPERATION

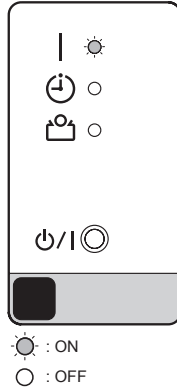
Instructions relating to heating (*) are applicable only to Heating and Cooling model (Reverse Cycle).

To start/stop operation

Press the Start/Stop button.

Operation lamp

Air conditioner ON: Lit brightly
Air conditioner OFF: Not lit



To set the operation mode

● Operation mode setting

Press the "MODE" button to set the operation mode.
Switches operation mode in following order.



● Room temperature setting

Press the "TEMP. (▲ ▼)" buttons to set the room temperature.

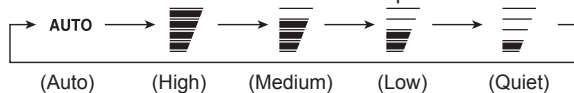
The temperature can be set in 0.5°C increments.

Temperature setting range

Auto..... 18 to 30 °C
Cool/Dry..... 18 to 30 °C
Heat* 16 to 30 °C

● Fan speed setting

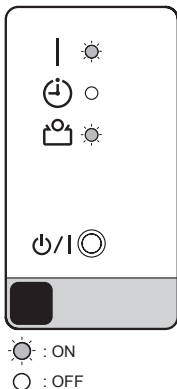
Press the "FAN" button to set the fan speed.



Economy operation

Press the "ECONOMY" button to start or stop Economy operation.

For details on this function, refer to page 6.



TIMER FUNCTIONS

Off timer (See page 5.)

Use this timer function to stop air conditioner operation. The timer operates and air conditioner operation stops after the set time has passed. The timer can be set up to 24 hours in advance.

On timer (See page 5.)

Use this timer function to start air conditioner operation. The timer operates and air conditioner operation starts after the set time has passed. The timer can be set up to 24 hours in advance.

Program timer (See page 5.)

You can set an integrated ON→OFF or OFF→ON timer. Either timer whose configured starting time is closer to the current time works first, and the order of timer operation is displayed as follows:

Timer Indicator on remote controller display

ON→OFF timer

OFF→ON timer

The timer that is set later starts counting down after the counting down of the preceding timer is finished.

Notes:

- If you change the setting of the timer after the program timer is set, the counting down of the timer will be reset at that moment.
- Time setting for each combination should be within a span of 24 hours.

Sleep timer (See page 5.)

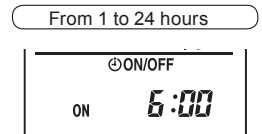
To help you to fall asleep comfortably and prevent excessive warming or cooling in sleep, the Sleep timer controls the temperature setting automatically before turning off the air conditioner completely.

ON/OFF TIMER

To set the On/Off timer

1 Press the "ON" timer button or "OFF" timer button.

2 Press the "SELECT (▲▼)" buttons to set the time required.



After the time is set, the timer will start automatically.

The amount of time until the On or Off timer operates that is displayed on the timer indicator decreases as time passes.

Example: On timer set for 6 hours

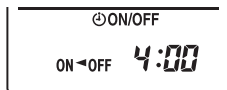
● To cancel

- Press the "CANCEL" button to cancel the timer mode.
- The timer mode can also be cancelled by changing to other timer modes by pressing the "ON" or "OFF" or "SLEEP" buttons.

PROGRAM TIMER

To set the Program timer

- 1 Set the desired times for On timer and Off timer. (See the setting for On or Off timer.)



Example: Off → On timer

- 2 After both On and Off timer is set, the remote controller will automatically indicate the Program timer setting. (ON → OFF, ON ← OFF will display)

● To cancel

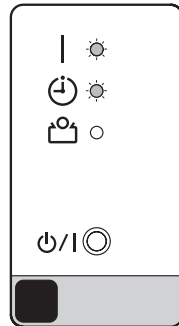
- Press the “CANCEL” button to cancel the timer mode.
- The timer mode can also be cancelled by changing to other timer modes by pressing the “ON” or “OFF” or “SLEEP” buttons.

SLEEP TIMER

To set the Sleep timer

- 1 Press the “SLEEP” button to activate the Sleep timer.

Operation indicator and Timer indicator on the indoor unit turns on.

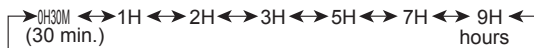


☀ : ON
○ : OFF

- 2 Adjust the time by pressing the “SELECT (Δ▽)” buttons.

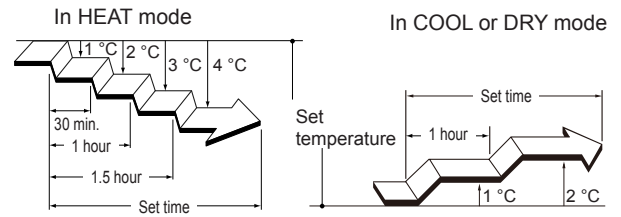
(About 5 seconds later, the remote controller display returns to standby screen.)

Each time you press the button, the time changes as follows:



To repeat the timer, press the “SLEEP” button when ☀SLEEP indicator is not displayed on the remote controller display.

To help you to fall asleep comfortably and prevent excessive warming or cooling in sleep, the Sleep timer controls the temperature setting automatically in accordance with the set time shown as follows. The air conditioner completely turns off after the set time has elapsed.



ECONOMY OPERATION

Instructions relating to heating (*) are applicable only to Heating and Cooling model (Reverse Cycle).

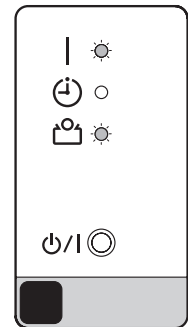
Begin air conditioner operation before performing this procedure.

To use the Economy operation

Press the “ECONOMY” button.

The Economy indicator will light.

Economy operation begins.



☀ : ON
○ : OFF

To stop the Economy operation

Press the “ECONOMY” button again.

The Economy indicator will go out.

Normal operation begins.

NOTES

About Economy operation

- During the monitor period in the Auto mode, the air conditioner operation will not change to Economy operation even if Economy operation is selected by pressing the “ECONOMY” button.
- When Economy operation mode is operated, the room temperature will be a little higher than the set-temp under Cooling mode and lower than the set-temp under Heating* mode. Therefore, the Economy mode is able to save more energy than other normal modes.

10°C HEAT OPERATION

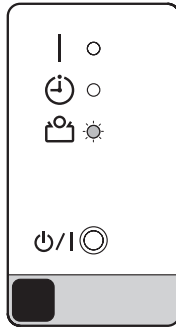
Instructions relating to heating (*) are applicable only to Heating and Cooling model (Reverse Cycle).

Note: In group control, where 2 or more units or remote controllers are in a system, this function cannot be used.

To use 10°C Heat operation*

Press the "10°C HEAT" button

The Operation indicator lamp (green) will go out, and the Economy indicator lamp (green) will light.



While 10°C Heat operation is in progress, only the following operation can be used.

- SET

To stop 10°C Heat operation*

Press the Start/Stop button

Then the operation stops and the Economy indicator lamp (green) will go out.

NOTES

About the 10°C Heat operation*

- The heating mode will not operate if the room temperature is high enough.
- The room temperature can be maintained at 10°C by pressing the "10°C HEAT" button so as to prevent the room temperature from falling too far.
- In case of multi-type air conditioner, if other indoor unit is used for heating, the temperature of the room where the 10°C HEAT function is applied will rise. When using the 10°C HEAT function, we recommend all indoor units should be run under the 10°C HEAT mode.
- You cannot use this function with the wired remote controller.

FAN CONTROL FOR ENERGY SAVING

To use the fan control for energy saving

- 1 Press the Start/Stop button until only the clock is displayed.
- 2 Press the "FAN" button for at least 5 seconds until the current Fan Control "FC" status is displayed.
- 3 Press the "TEMP. (∧ ∨)" buttons to switch between on or off.
- 4 Press the Start/Stop button to send the setting to the indoor unit. After the status is sent, the display will automatically return to the original screen.



- If no buttons are pressed within 30 seconds after the "FC" status is displayed, the system returns to the original clock display. In this case, start again from step 1.

OTHER SETTINGS AND OPERATION

Remote controller custom code

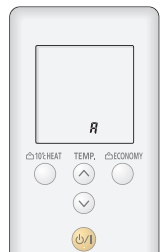
When two or more air conditioners are installed in a room and the remote controller is operating an air conditioner other than the one you wish to set, change the custom code of the remote controller to operate only the air conditioner you wish to set (4 selections possible).

When two or more air conditioners are installed in a room, please contact your retailer to set the individual air conditioner custom codes.

Selecting the remote controller custom code

Use the following steps to select the custom code of the remote controller. (Note that the air conditioner cannot receive a signal if it has not been set for the matching custom code.)

- 1 Press the Start/Stop button until only the clock is displayed on the remote controller display.
- 2 Press the "MODE" button for at least 5 seconds to display the current custom code (initially set to A).
- 3 Press the "TEMP. (∧ ∨)" buttons to change the custom code between A→B→C→D. Match the code on the display to the air conditioner custom code.
- 4 Press the "MODE" button again to return to the clock display. The custom code will be changed.



- If no buttons are pressed within 30 seconds after the custom code is displayed, the system returns to the original clock display. In this case, start again from step 1.
- The air conditioner custom code is set to "A" prior to shipment. Contact your retailer to change the custom code.
- If you do not know the air conditioner custom code setting, try each of the custom codes (A→B→C→D) until you find the code which operates the air conditioner.

Manual auto operation

Use the Manual auto operation in the event the remote controller is lost or otherwise unavailable.

How to use the main unit controls

Press the Manual Auto button more than 3 seconds and less than 10 seconds on the main unit control panel. (See page 2)

To stop operation, press the Manual Auto button for 3 seconds.

- When the air conditioner is operated with the controls on the Main Unit, it will operate under the same mode as the AUTO mode selected on the remote controller (see page 4).
- The fan speed selected will be AUTO and the temperature setting will be standard. (24 °C)

CLEANING AND CARE

⚠ CAUTION

- Before cleaning the unit, be sure to stop the unit and disconnect the power supply.
- Turn off the electrical breaker.
- The fan operates at high speed inside the unit, and could result in personal injury.
- As filter cleaning involves high-altitude operation, please consult the professional technical service personnel.

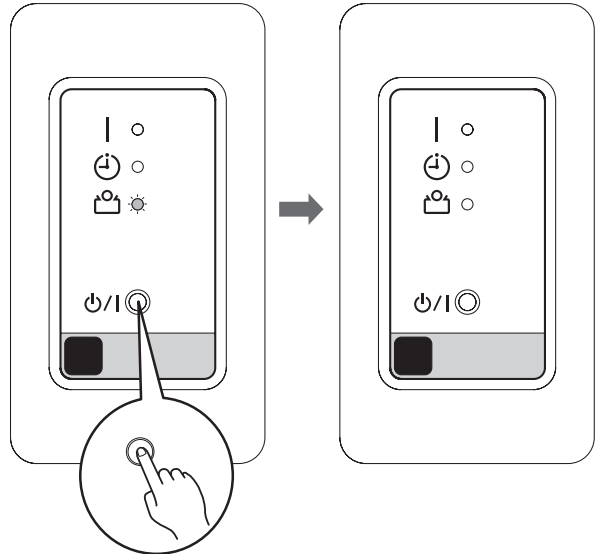
- When used for extended periods, the unit may accumulate dirt inside, reducing its performance. We recommend that the unit be inspected regularly, in addition to your own cleaning and care. For more information, consult authorized service personnel.
- When cleaning the unit, do not use water hotter than 40°C, harsh abrasive cleansers, or volatile agents like benzene or thinner.
- Do not expose the unit to liquid insecticides or hairsprays.
- If the unit will not be operated for a period of 1 month or more, be sure to allow the inner parts of the unit to dry thoroughly, in advance, by operating the unit in Fan mode for half a day.

Filter Reset

- This function can be used if set correctly during installation. Please consult authorized service personnel when using this function.

- It lights on when it is time to clean the air filters.

After turning the power on, press the Manual Auto button for 2 seconds or less on the indoor unit.



☀: FLASHING ○: OFF
(3 times)

TROUBLESHOOTING

Instructions relating to heating (*) are applicable only to Heating and Cooling model (Reverse Cycle).

⚠ WARNING

- In the event of a malfunction (burning smell, etc.), immediately stop operation, turn off the electrical breaker, and consult authorized service personnel. Merely turning off the unit's power switch will not completely disconnect the unit from the power source. Always be sure to turn off the electrical breaker to ensure that power is completely off.

Before requesting service, perform the following checks:

NORMAL FUNCTION

Does not operate immediately

- If the unit is stopped and then immediately started again, the compressor will not operate for about 3 minutes, in order to prevent fuse blowouts.
- Whenever the electrical breaker is turned off then on again, the protection circuit will operate for about 3 minutes, preventing unit operation during that period.

Noise is heard

- During operation and immediately after stopping the unit, the sound of water flowing in the air conditioner's piping may be heard. Also, noise may be particularly noticeable for about 2 to 3 minutes after starting operation (sound of coolant flowing).
- During operation, a slight squeaking sound may be heard. This is the result of minute expansion and contraction of the front cover due to temperature changes.

* ● During Heating operation, a sizzling sound may be heard occasionally. This sound is produced by the Automatic defrosting operation.

<<See operating manual of indoor unit.>>

Smells

- Some smell may be emitted from the indoor unit. This smell is the result of room smells (furniture, tobacco, etc.) which have been taken into the air conditioner.

Mist or steam are emitted

- During Cooling or Dry operation, a thin mist may be seen emitted from the indoor unit. This results from the sudden cooling of room air by the air emitted from the air conditioner, resulting in condensation and misting.

* ● During Heating operation, the outdoor unit's fan may stop, and steam may be seen rising from the unit. This is due to the Automatic defrosting operation.

<<See operating manual of indoor unit.>>

Air flow is weak or stops

- Indoor unit fan may start later than the outdoor unit fan, or it may stop when the outdoor unit fan is not operating. This is due to the fan control for energy saving operation.
- To disable this function, refer to page 7. (This function cannot be disabled in Auto fan mode.)

* ● When Heating operation is started, fan speed is temporarily very low, to allow internal parts to warm up.

* ● During Heating operation, if the room temperature rises above the thermostat setting, the outdoor unit will stop, and the indoor unit will operate at very low fan speed. If you wish to warm the room further, set the thermostat to a higher setting.

* ● During Heating operation, the unit will temporarily stop operation (maximum of 15 minutes) as the Automatic defrosting mode operates. During the Automatic defrosting operation, the Operation indicator lamp will flash.

- The fan may operate at very low speed during Dry operation or when the unit is monitoring the room's temperature.

- During Quiet operation, the fan will operate at very low speed.

- In the monitor Auto operation, the fan will operate at very low speed.

Water is produced from the outdoor unit

* ● During Heating operation, water may be produced from the outdoor unit due to the Automatic defrosting operation.

<<See operating manual of Remote controller.>>

Humidity does not drop

In the case of Dry operation.

- In some conditions of the room, the humidity does not drop.
- In order to lower the humidity, set a lower room temperature.

CHECK ONCE MORE

Does not operate at all

- Has the circuit breaker been turned off?
- Has there been a power failure?
- Has a fuse blown out, or a circuit breaker been tripped?
- Is the timer operating?

Poor cooling (or heating*) performance

- Is the air filter dirty?
- Are the air conditioner's intake grille or outlet port blocked?
- Did you adjust the room temperature settings (thermostat) correctly?
- Is there a window or door open?
- In the case of Cooling operation, is a window allowing bright sunlight to enter? (Close the curtains.)
- In the case of Cooling operation, are there heating apparatus and computers inside the room, or are there too many people in the room?
- Is the unit set for Quiet operation?
- Is the air conditioner in Economy mode?
- Are the Remote Controller's batteries dead?
- Are the Remote Controller's batteries loaded properly?

If the problem persists after performing these checks, or if you notice burning smells, stop operation immediately, disconnect the power supply, and consult with authorized service personnel.